



Charlottesville Regional Chamber of Commerce

*"... dedicated to representing private enterprise, promoting business
and enhancing the quality of life in our Greater Charlottesville communities."*

THE CHAMBER JOBS REPORT – 2011

Report and Analysis: Employment in Greater Charlottesville 2000 – 2010

A report to the
Charlottesville Regional Chamber of Commerce
Charlottesville, Virginia

Robert P. Hodous, Chairman of the Board of Directors
Patricia Cluff, First Vice Chairwoman of the Board
Valerie Long, Vice Chairwoman of the Board – Economic Vitality
Kristina Hofmann, Chairwoman, Economic & Government Affairs Committee
Timothy Hulbert, IOM, President & Chief Executive

August, 2011

Prepared by:
Kevin Decker
Decker Economics
Kinderhook, New York

Underwritten by:





Charlottesville Regional
Chamber of Commerce

*"... dedicated to representing private enterprise, promoting business
and enhancing the quality of life in our Greater Charlottesville communities."*

cvillechamber.com • 434.295.3141
PO Box 1564 • Fifth & Market Streets • Charlottesville, Virginia 22902

**Preface – The Chamber Jobs Report – 2011 – Report and Analysis:
Employment in Greater Charlottesville, 2000 – 2010**

Our Charlottesville Regional Chamber of Commerce, as a service to our Chamber membership and the community at large, is pleased to present the eighth report in a series of comprehensive jobs reports conducted by independent economist, Kevin Decker of Decker Economics. Mr. Decker's comprehensive report and analysis, detailing employment within our Greater Charlottesville region for the decade from 2000 through 2010, follows. Our community's economic vitality and job-base is a central and continuing focus of our Chamber. Enterprise development and job creation continues to the 'Job One' priority of our Chamber.

This *"2011 Chamber Jobs Report"* is made possible through the underwriting support of Chamber member enterprises – *Adams & Garth Staffing, The Thomas Jefferson Partnership for Economic Development,* and *Wells Fargo*. Equally important is the interest and involvement of a number of active Chamber member representatives. Our Chamber thanks these active Chamber citizens for their support.

The Chamber Jobs Report – 2011, Report and Analysis: Employment in Greater Charlottesville, 1995-2009 – shows that Greater Charlottesville's job-producing engines remained flat as a total of just 11 net jobs (+34 in private enterprise; -23 in government) were added in 2010 over 2009. The jobs picture is an improvement over the most recent previous two years. The region's total net jobs dropped over the course of 2008 and 2009, losing 4,062 net jobs over those two years (-622 in 2008; -3,440 in 2009).

Since 2000, total jobs in the Greater Charlottesville region have grown from 100,708 jobs in 2000 to 110,073 jobs in 2010, an increase of +9.3% or 9,365 jobs – for an average annual growth rate of +0.89%. In the Century's first decade, the region has added a net gain of 4,411 (+6% / +0.59%/year) jobs in private enterprise and 4,954 (+17.9% / +1.66%/year) in government jobs.

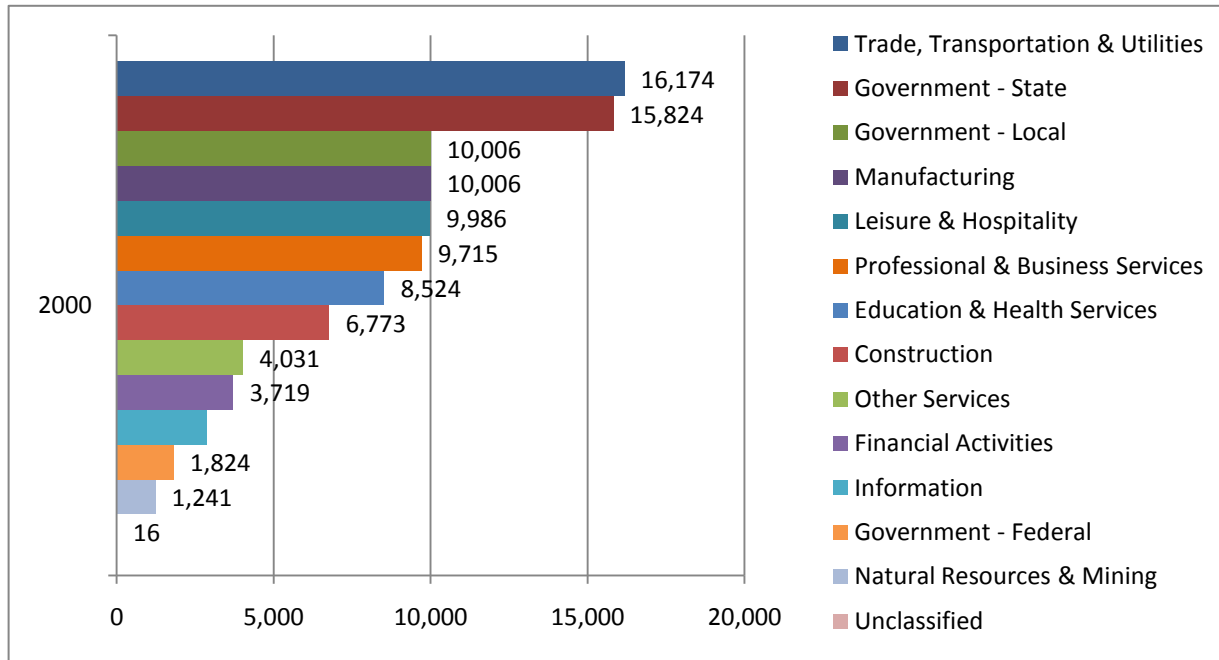
The Chamber Jobs Report reveals five distinct job patterns within the region: overall job growth in private enterprise from 2000 – 2010; a decline in private enterprise jobs from 2000 – 2003; a rebound in private enterprise job growth from 2003 – 2007; total and private enterprise job loss in 2008 and 2009; and, annual growth in government jobs.

The Chamber Jobs Report also shows that over the study period, private enterprise job growth in Greater Charlottesville (+6%) outpaced private enterprise job growth in the rest of Virginia (+0.8%).

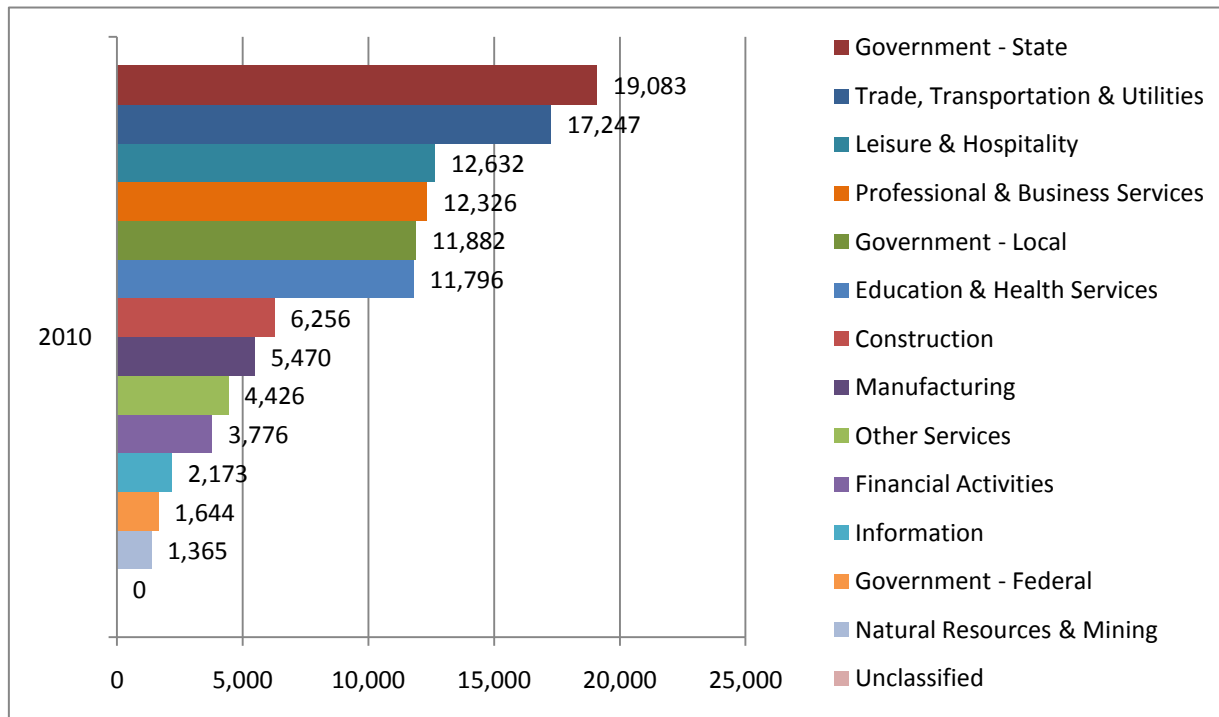
Early and incomplete employment indicators suggest that a modest jobs rebound has occurred during the first six months of 2011 as the region's unemployment rate has dropped below 2010. The Report indicates that a 2011 jobs growth rebound within the Greater Charlottesville region could be +/-1.5%. Also, in 2011, the US Defense Intelligence Agency completes its initial deployment of more than 800 new federal government jobs at its Joint Use Intelligence Analysis Facility at its Rivanna Station defense campus. In addition, a number of new and growing Defense enterprises continue to add to their employment base within the region.

This Report clearly confirms that our Greater Charlottesville Region is not immune to national and international economic forces. It is our Chamber purpose that this Report will continue to energize facts-based understanding and discussion among business and civic groups as well as in public policy arenas about the nature of job creation, job retention, job enhancement as well as job loss within our region.

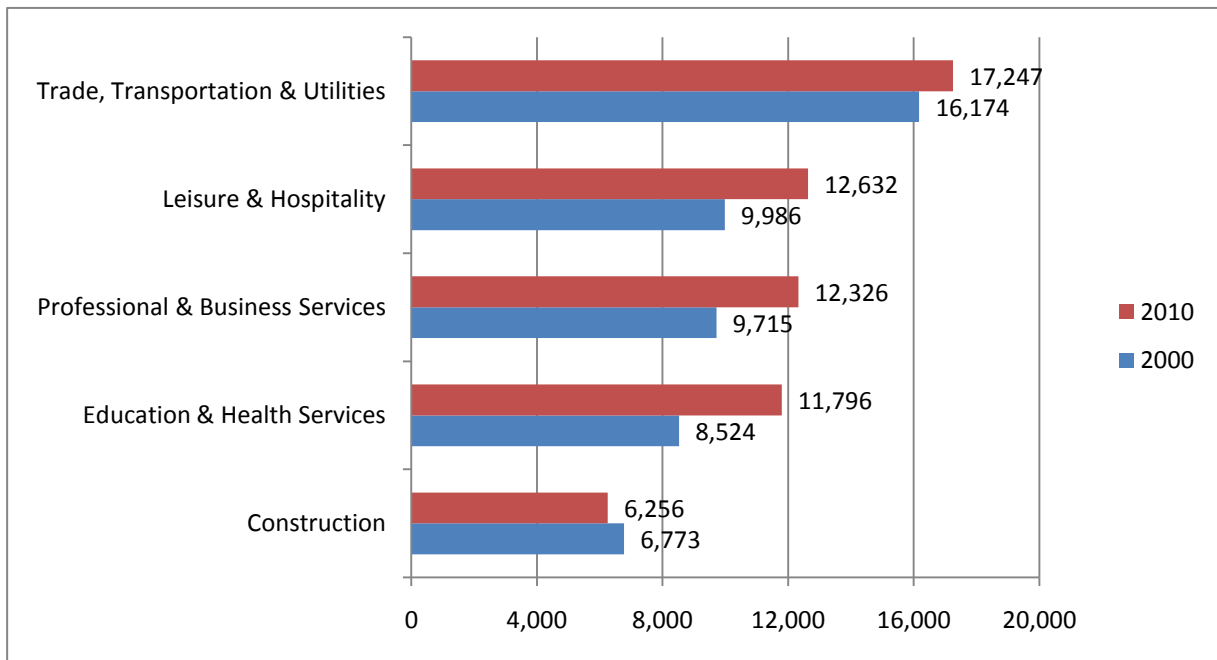
2000: 100,708 Total Jobs
Greater Charlottesville



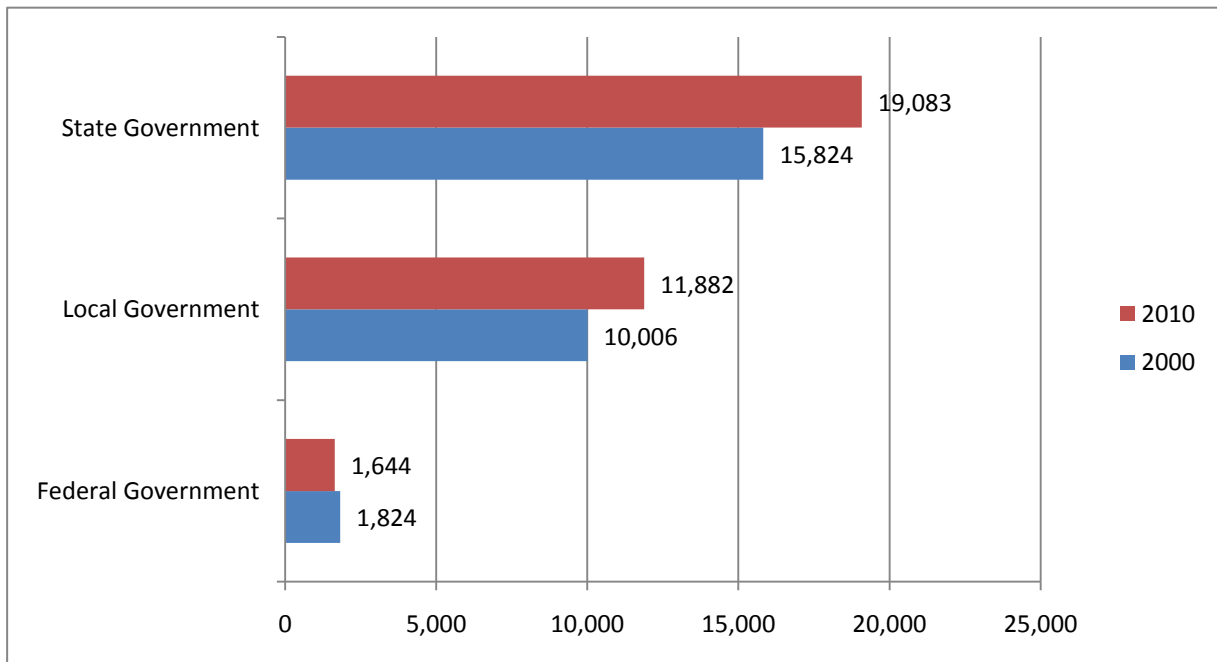
2010: 110,073 Total Jobs
Greater Charlottesville



Top Five Sectors Private Enterprise Employment Comparison Greater Charlottesville



Government Sector Employment Comparison Greater Charlottesville



Introduction

The *2011 Chamber Jobs Report* marks the eighth year in which the Charlottesville Regional Chamber of Commerce has reported comprehensively on the jobs landscape of the Greater Charlottesville communities. These annual *Chamber Jobs Reports* have become a definitive indicator of jobs activity over the long term, within the region.

This year's report features two changes.

- The *2011 Chamber Jobs Report* reports comprehensively on job activity from the turn of the 21st Century – 2000 – through 2010, a full decade. Previous Reports have used 1995 as a baseline.
- The *2011 Chamber Jobs Report* includes jobs data from Orange County added to the comprehensive data from Albemarle, Fluvanna, Greene, Louisa and Nelson Counties as well as the City of Charlottesville. Chamber member employers in Orange County have an interest in seeing and tracking jobs data in that county. Previous Reports did not include Orange County jobs data.

I. Overall Employment: 2000-2010

After two years of job losses, employment in the Greater Charlottesville Region stabilized in 2010. Overall employment – private and public sectors – was essentially unchanged at 110,073. While private sector employment increased by 34 (0.04%), it was almost entirely offset by the loss of 23 (0.07%) public sector jobs.

Overall since 2000, total private and public sector employment in the Greater Charlottesville Region has grown by 9.3% -- from an annual average of 100,708 in 2000 to 110,073 in 2010. This growth is a combination of private sector job growth of 4,411 jobs (6.0%) and a growth in public sector jobs of 4,954 (17.9%).

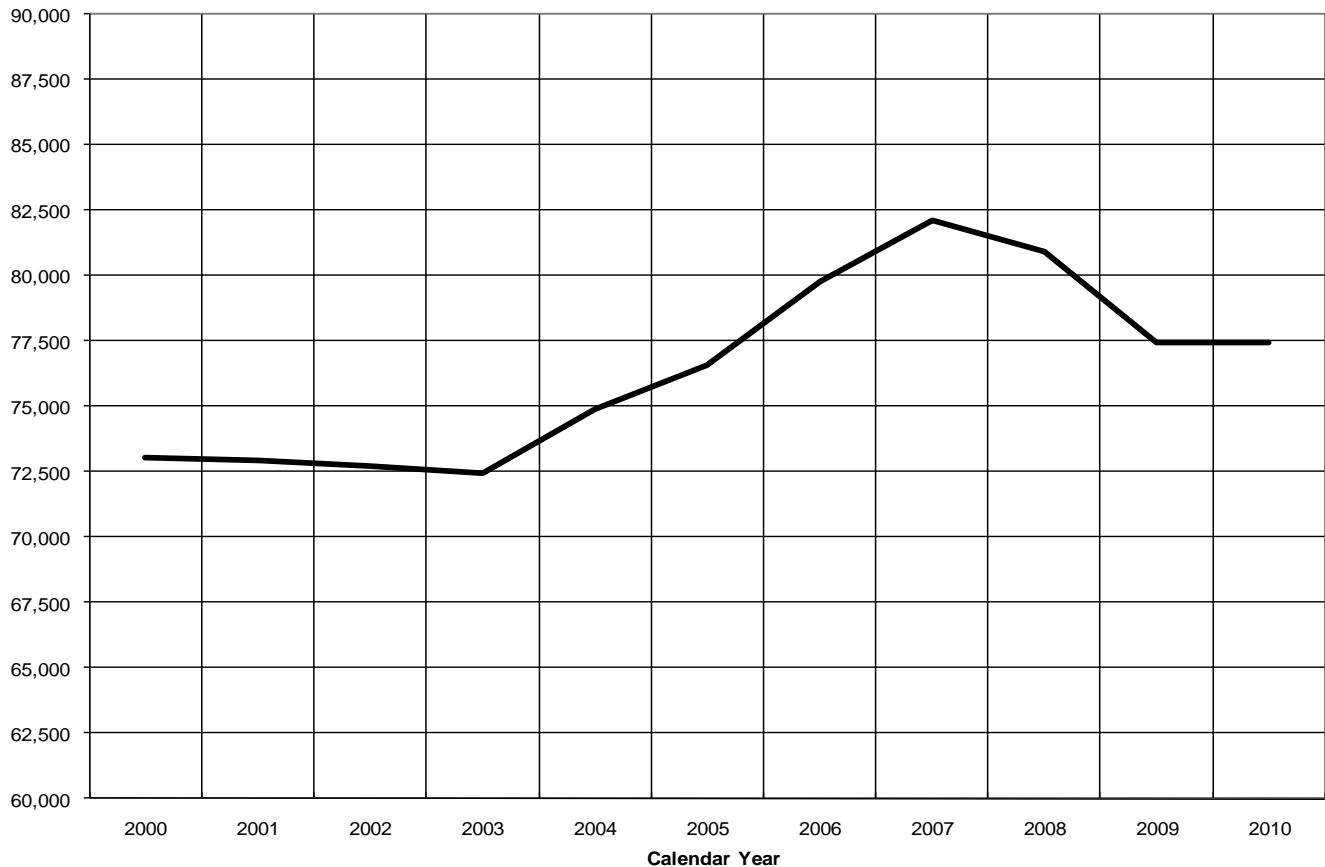
The overwhelming majority the job growth

in the Region over the study period occurred within Albemarle County. Of the 9,677 new jobs in Albemarle County since 2000, 4,788 were private sector jobs and 4,889 were public sector jobs.

In percentage terms, the largest job increases over the study period occurred in Louisa County (26.1%) and Albemarle County (24.9%). In Louisa County, 78% of the job growth occurred in the private sector.

The weakest performance, both in absolute numbers and percentage terms, occurred in the City of Charlottesville (a *decline* of 3,248 jobs, an 8.6% decrease). Over the study period, the City of Charlottesville lost 2,386 private sector jobs and approximately 862 public sector jobs.

Figure 1
PRIVATE SECTOR EMPLOYMENT IN GREATER CHARLOTTESVILLE REGION



Source: Data From Virginia Employment Commission

II. General Trends in Private Sector Employment: 2000-2010

Figure 1 shows the overall growth in private sector employment in the Region since 2000.

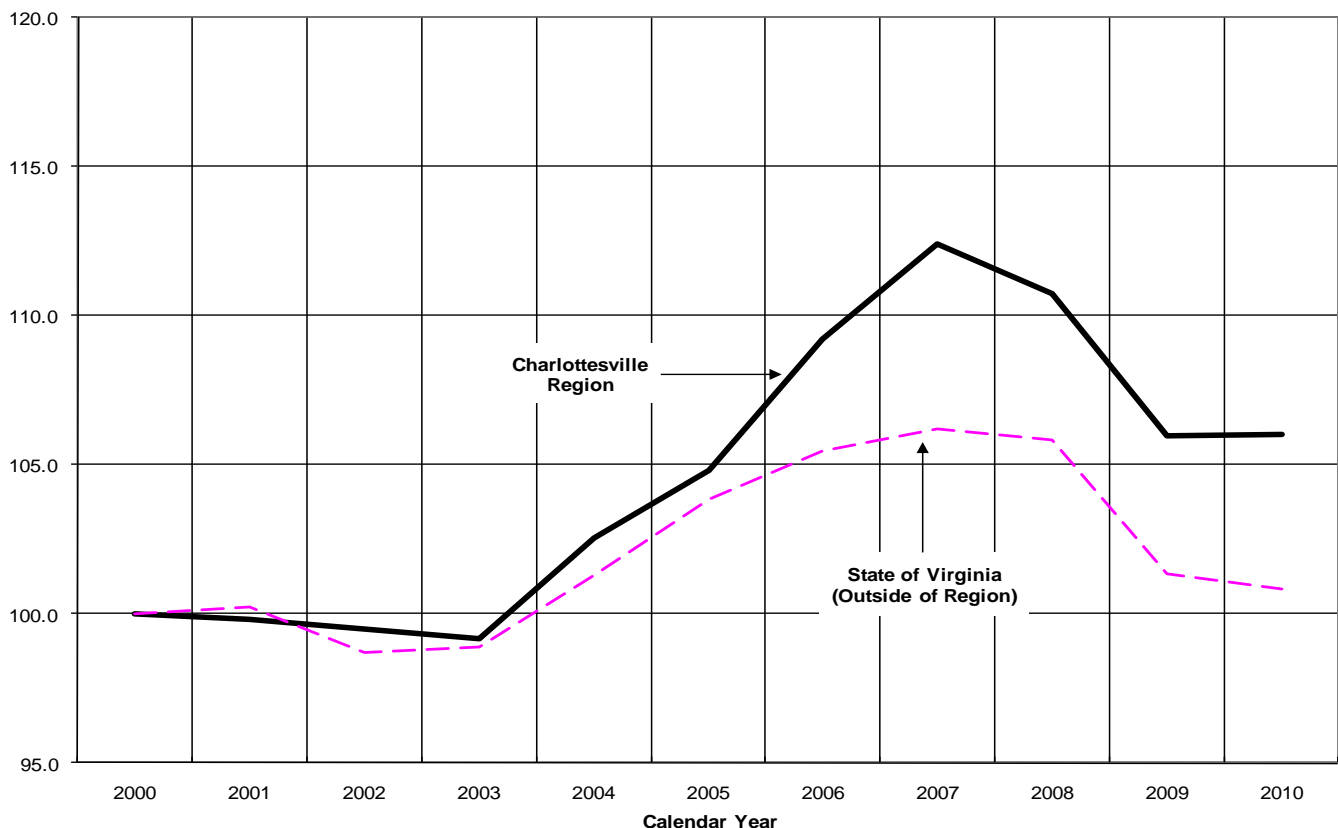
Private sector employment in the Greater Charlottesville Region has grown since 2000—from an annual average of 73,054 in 2000 to 77,465 in 2010 – an increase of 4,411 jobs, or 6.0%. That job growth can be tracked in four distinct periods:

- A period of decline in private sector jobs: 2000 (73,054) to 2003 (72,430) – a decline of 624 jobs or 0.9%;
- A period of private sector job growth rebound: 2003 (72,430) to 2007 (82,135) – an increase of 9,705 jobs or 13.4%;

- Another period of private sector job loss: 4,704 private sector jobs, or 5.7% in 2008 and 2009; and
- 2010 with essentially no change in employment (34 jobs added, 0.04%).

To put the employment growth experience of the Region in perspective, Figure 2 compares private sector employment growth in the Greater Charlottesville Region to the private sector employment growth experienced in the Commonwealth of Virginia (outside of the Charlottesville Region). To allow for comparison between areas with different sized employment bases, the employment data has been standardized so that the 2000 level of employment in each area is expressed as an index of 100.

Figure 2
PRIVATE SECTOR EMPLOYMENT
GREATER CHARLOTTESVILLE REGION & THE STATE OF VIRGINIA



Source: Data From Virginia Employment Commission

For example, the graph showing the Greater Charlottesville Region to be at approximately 106 in 2010 means that private sector employment in the Region is approximately 6% higher in 2010 than in 2000.

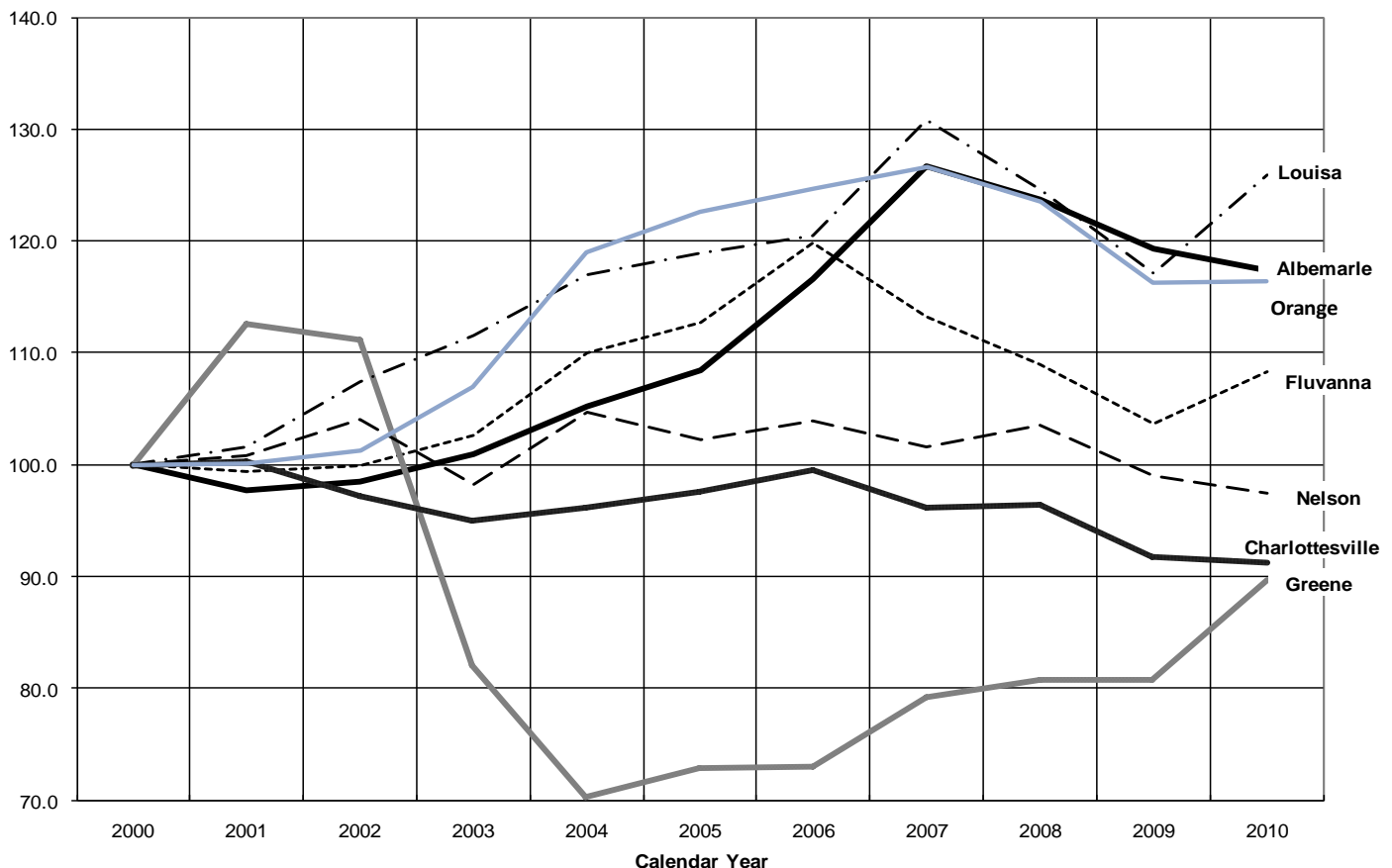
Figure 2 shows that private sector employment growth in the Greater Charlottesville Region generally tracked that of the Commonwealth between 2000 and 2003. During that time period, the Region's private sector employment decreased by 0.9% while the Commonwealth's private sector employment (outside of the Region) decreased by 1.1%.

Between 2003 and 2005, the Region and the rest of the Commonwealth experienced similar

gains in private sector employment. After significantly outperforming the Commonwealth in 2006 and 2007, the Region did worse in 2008. In 2009, the Region and the rest of the Commonwealth experienced similar losses in private sector employment. In 2010 the Region outperformed the rest of the Commonwealth, with private sector employment increasing by 0.04% in the Region and decreasing by 0.5% in the Commonwealth outside of the Region.

Overall, between 2000 and 2010, private sector employment in the Greater Charlottesville Region increased by 6.0%, compared to 0.8% for the Commonwealth (outside of the Region).

**Figure 3
PRIVATE SECTOR EMPLOYMENT
WITHIN THE GREATER CHARLOTTESVILLE REGION**



Source: Data From Virginia Employment Commission

Figure 3 compares private sector employment growth within the Region. Again, to allow for comparison between areas with different sized employment bases, the employment data has been standardized so that the 2000 level of employment in each area is expressed as an index of 100.

Figure 3 clearly shows that the component municipalities of the Greater Charlottesville Region have had widely varying rates of private sector employment growth since 2000.

Figure 3 also shows that some component municipalities of the Region gained private sector jobs in 2010 while others lost private sector jobs.

Albemarle County

Private sector employment in *Albemarle County* was relatively flat between 2000 and 2003. Between 2003 and 2007, private sector employment in Albemarle County increased at an average annual rate of approximately 5.9%.

Since 2007, private sector employment in Albemarle County has declined by 2,546 (7.3%). Although the job losses were greatest in 2008 and 2009, Albemarle County did experience a loss of 532 private sector jobs in 2010. While less than the prior two years, the private sector job losses in Albemarle County in 2010 were the largest in the Region both in absolute and percentage terms.

The job losses in 2010 were concentrated in the Manufacturing (318 jobs); Trade, Transportation & Utilities (318 jobs); Construction (144 jobs) and Professional & Business Services (112 jobs) industry sectors. Private sector employment in 2010 did increase in five industry sectors, with the largest increases occurring in the

Education & Health Services (130 jobs) and the Financial Activities (122 jobs) industry sectors.

Albemarle County has the largest private sector employment base within the Region in 2010 with 32,290 jobs. Overall, private sector employment in Albemarle County is 17.4% higher in 2010 compared with 2000 (27,502), the 2nd highest rate of increase in the Region.

City of Charlottesville

Between 2000 and 2003, private sector employment in *Charlottesville* generally declined, including a 2.2% drop in 2003. Between 2003 and 2006, private sector employment in Charlottesville increased by 4.7%. After losing over 920 private sector jobs (3.4%) in 2007, private sector employment in the City of Charlottesville increased by 74 (0.3%) in 2008.

However, the City lost 1,262 private sector jobs in 2009 and another 157 private sector jobs in 2010.

The job losses that occurred in 2010 were concentrated in the Professional & Business Services (187 jobs) and Financial Activities (150 jobs) industry sectors. The City did add private sector jobs in four industry sectors in 2010, with the largest increases occurring in the Leisure & Hospitality (219 jobs) and Education & Health Services (88 jobs) industry sectors.

The City of Charlottesville has the 2nd largest private sector employment base within the Region in 2010 with 24,708 jobs. However, private sector employment in Charlottesville is 8.8% lower in 2010 than it was in 2000 (27,094), the 2nd worst overall private sector job growth performance in the Region.

Fluvanna County

The 4th best performer in the Region since 2000 was *Fluvanna County*. Private sector employment in Fluvanna County was relatively flat between 2000 and 2002. Between 2002 and 2006, private sector employment in Fluvanna County increased at an average annual rate of approximately 4.7%. Between 2006 and 2009 Fluvanna County lost a total of 410 private sector jobs (13.5%)

However, private sector employment in Fluvanna County increased by 117 (4.4%) in 2010.

Five industry sectors in Fluvanna County added private sector jobs in 2010 with the largest increases occurring in Construction (75 jobs) and Education & Health Services (43 jobs). While five industry sectors lost jobs in 2010, the employment declines were relatively modest. The largest declines occurred in Other Services (12 jobs, 6.4%) and Leisure & Hospitality (11 jobs, 2.8%).

Private sector employment of 2,749 in 2010 in Fluvanna County is 8.3% above the level of employment in 2000 of 2,538.

Greene County

After increasing by 12.6% between 2000 and 2001, private sector employment in *Greene County* declined by 1,149 (37.6%) between 2001 and 2004. Greene County added private sector jobs in each year between 2005 and 2008, with a total increase of 288 (15.1%). After being essentially unchanged for 2009, private sector employment increased by 243 in 2010.

The 11.1% increase in private sector employment in Greene County was the largest

percentage increase of any municipality in the Region for 2010.

The private sector job gains in Greene County in 2010 were spread across only four industry sectors and was dominated by an increase of 183 jobs in Professional & Business Services and 106 jobs in Trade, Transportation & Utilities. Six industry sectors lost jobs in 2010, with the largest declines occurring in Construction (34 jobs, 12.1%) and Manufacturing (23 jobs, 19.0%).

Overall, private sector employment in Greene County is 10.2% lower in 2010 (2,433) than it was in 2000 (2,710), the worst overall private sector job growth performance of the Region.

Louisa County

Private sector employment in *Louisa County* increased in every year between 2000 and 2007. In total, the County added 1,413 jobs during this period, a 30.9% increase. The data show private sector employment in Louisa County decreased by 284 (4.7%) in 2008 and by 349 (6.1%) in 2009.

However, private sector employment in Louisa County increased by 404 (4.4%) in 2010. In absolute terms, the private sector job growth in Louisa County in 2010 was the largest in the Region.

Seven industry sectors in Louisa County added private sector jobs in 2010 with the largest increases occurring in Construction (197 jobs); Trade, Transportation & Utilities (196 jobs); and Professional & Business Services (99 jobs). Only three industry sectors lost jobs in 2010. The largest declines occurred in Manufacturing (111 jobs, 8.8%) and Leisure & Hospitality (23 jobs, 5.3%).

Overall, private sector employment in Louisa County is 25.9% higher in 2010 (5,761) than it was in 2000 (4,577), the best overall private sector job growth performance of the Region.

Nelson County

Since 2000, private sector employment in *Nelson County* has fluctuated up (2001, 2002, 2004, 2006, 2008) and down (2003, 2005, 2007, 2009, 2010), with the net result being an overall decrease of 70 private sector jobs since 2000.

In 2010, Nelson County experienced a 1.6% decrease in private sector employment (43 jobs). Seven industry sectors in Nelson County lost private sector jobs in 2010 with the largest decreases occurring in Construction (39 jobs) and Leisure & Hospitality (27 jobs). Only three industry sectors added private sector jobs in 2010. The largest increases occurred in Manufacturing (25 jobs, 12.8%) and Education & Health Services (14 jobs, 4.5%).

Private sector employment in Nelson County stood at 2,703 in 2010, an overall decrease of 2.5% from 2000's employment of 2,773.

Orange County

Private sector employment in *Orange County* was relatively flat between 2000 and 2002. Between 2002 and 2007, private sector employment in Orange County increased at an average annual rate of approximately 4.6%. Between 2007 and 2009, private sector employment in Orange County declined by 603 (8.1%).

In 2010, private sector employment in Orange County was essentially unchanged from 2009 with a net gain of 1 job.

Five industry sectors in Orange County added private sector jobs in 2010 with the largest increases occurring in Education & Health Services (90 jobs); Leisure & Hospitality (36 jobs); and Natural Resources & Mining (30 jobs). Five industry sectors lost jobs in 2010. The largest declines occurred in Manufacturing (69 jobs); Trade, Transportation & Utilities (45 jobs) and Construction (42 jobs).

Overall, private sector employment in Orange County is 16.3% higher in 2010 (6,820) compared with 2000 (5,862), the 3rd highest rate of increase in the Region.

III. Trends in Industry Level Employment: 2000-2010

Analysis of trends in industry level employment¹ allows for a more complete understanding of the dynamics of employment changes in the Greater Charlottesville Region.

Figure 4 compares industry level employment in the Greater Charlottesville Region in 2000 and 2010.

In 2000, the industry sectors accounting for the most private sector employment in the Region were Trade, Transportation & Utilities (22.1%); Leisure & Hospitality (13.7%); and Manufacturing (13.7%).

Between 2000 and 2010, the Manufacturing industry sector lost approximately

¹ See the Appendix for a description of the industry groupings used in this report.

4,536 jobs, a 45.3% decrease. Other industry sectors to experience a drop in private sector employment over the study period were Information (697 jobs, 24.3%) and Construction (517 jobs, 7.6%).

**Figure 4
Greater Charlottesville Region Private Sector Employment by Industry**

<u>Industry</u>	<u>2000</u>		<u>2010</u>		<u>2000-2010 Change</u>	
	<u>Actual#</u>	<u>Percent</u>	<u>Actual#</u>	<u>Percent</u>	<u>Actual #</u>	<u>Percent</u>
Natural Resources & Mining	1,241	1.7%	1,365	1.8%	+124	+10.0%
Construction	6,773	9.3%	6,256	8.1%	-517	-7.6%
Manufacturing	10,006	13.7%	5,470	7.1%	-4,536	-45.3%
Trade, Transport. & Utilities	16,174	22.1%	17,247	22.3%	+1,073	+6.6%
Information	2,870	3.9%	2,173	2.8%	-697	-24.3%
Financial Activities	3,719	5.1%	3,776	4.9%	+57	+1.5%
Professional & Business Services	9,715	13.3%	12,326	15.9%	+2,611	+26.9%
Education & Health Services	8,524	11.7%	11,796	15.2%	+3,272	+38.4%
Leisure & Hospitality	9,986	13.7%	12,632	16.3%	+2,646	+26.5%
Other Services	4,031	5.5%	4,426	5.7%	+395	+9.8%
Unclassified	16	0.0%	0	0.0%	NA	NA
Total	73,055		77,467		+4,412	+6.0%

Source: Data from Virginia Employment Commission

Between 2000 and 2010, the fastest growing industry sectors, in both percentage and absolute terms, were Education & Health Services with 3,272 new jobs, a 38.4% increase; Professional & Business Services with 2,611 new jobs, a 26.9% increase; and Leisure & Hospitality with 2,646 new jobs, a 26.5% increase.

In 2010, five industry sectors experienced decreases in private sector employment while five experienced increases. Of the industry sectors that lost jobs in the Region in 2010, three-quarters of the affected jobs were in Manufacturing (524 jobs; 8.7% decrease).

Of the industry sectors that gained jobs in the Region in 2010, nearly 90 percent of the job gains were in Education & Health Services (406 jobs, 3.6% increase) and Leisure & Hospitality (225 jobs, 1.8% increase).

Figure 5
Changes in Private Sector Employment, by Industry
Greater Charlottesville Region and State of Virginia

<u>Industry</u>	<u>2000-2010 Percent Change</u>	
	<u>Region</u>	<u>State</u>
Natural Resources & Mining	+10.0%	-13.6%
Construction	-7.6%	-12.8%
Manufacturing	-45.3%	-36.0%
Trade, Transport. & Utilities	+6.6%	-4.3%
Information	-24.3%	-35.4%
Financial Activities	+1.5%	-2.5%
Professional & Business Serv.	+26.9%	+14.8%
Education & Health Services	+38.4%	+40.2%
Leisure & Hospitality	+26.5%	+14.8%
Other Services	+9.8%	+5.2%
<u>Unclassified</u>	NA	NA
Total	+6.0%	+0.8%

Data for Virginia is for the State outside of the Greater Charlottesville Region
Source: Data from Virginia Employment Commission

Figure 5 compares changes in industry employment in the Greater Charlottesville Region against the Commonwealth of Virginia (outside of the Region).

During the study period, the Greater Charlottesville Region outperformed the rest of the Commonwealth in 8 of the 10 industry sectors. In particular, the Region substantially outperformed the Commonwealth in Natural Resources & Mining; Trade, Transportation & Utilities; Information; Professional & Business Services; and Leisure & Hospitality.

The worst performing industry sector in the Region over the study period, manufacturing, also experienced commensurate job losses at the

Commonwealth level, indicating that international and national economic forces are driving employment trends in that industry sector.

Figure 6
Public Sector Employment in the Greater Charlottesville Region

	<u>Local Government (#)</u>	<u>State Government (#)</u>	<u>Federal Government (#)</u>	<u>Total (#)</u>
2000	10,006	15,824	1,824	27,654
2001	10,366	16,362	1,540	28,268
2002	10,753	16,696	1,589	29,038
2003	10,747	17,120	1,610	29,477
2004	10,866	17,674	1,556	30,096
2005	11,055	18,236	1,565	30,856
2006	11,349	18,696	1,583	31,628
2007	11,614	18,808	1,569	31,991
2008	11,874	19,143	1,568	32,585
2009	11,957	19,066	1,608	32,631
2010	11,882	19,083	1,644	32,609
<i>Overall Change 2000-2010:</i>	18.7%	20.6%	-9.9%	17.9%

Source: Data from Virginia Employment Commission

IV. Public Sector Employment

Public sector employment is very important in the Greater Charlottesville Region, employing approximately 32,609 persons in 2010 and thus making it the largest single source of employment in the Greater Charlottesville Region.

Figure 6 tracks the changes in government employment in the Greater Charlottesville Region since 2000. The first trend to be noted is that, unlike private sector employment in the Region, government employment increased in every year since 2000 except for 2010. Overall, total government employment in the Region is nearly 18% higher in 2010 than it was in 2000.

The largest sector of government employment in the Region, and the fastest growing since 2000, is State government. In 2010 the State

government sector employed over 19,000 people in the Region.

State government employment in the Region increased by 3,259 jobs (20.6%) between 2000 and 2010. The only decline in State government employment in the Region occurred between 2008 and 2009.

The largest “State government” employer in the Region is the University of Virginia, with its employment locations within Albemarle County (+/- 65%) and the City of Charlottesville (+/- 35%). The University’s approximately 13,000 state employees are funded primarily (92%) by private, tuition, university-generated and other non-state tax sources. A sizeable number of “university employees” are not included among “state government employees” but are accounted for in

their respective NAICS employment codes such as “Education & Health Services”.

Other State employers in the Region include Piedmont Virginia Community College, the Department of Corrections, the Department of Forestry, Department of Transportation, and others.

The 2nd largest sector (and 2nd fastest growing since 2000) of government employment in the Region is local government. In 2010 the local government sector employed nearly 11,900 people in the Region.

Between 2000 and 2010, local government employment in the Region grew by 18.7% (1,876 jobs). Consistent with trends being observed around the country, local government employment decreased by 75 jobs (0.6%) in 2010. This was only the second time since 2000 (2003 being the other) that local government employment in the Region declined.

Federal government employment in the Region has been subject to more variable year-to-year growth. Overall, Federal government employment is 9.9% lower in 2010 than in 2000, with most of the decline having occurred in 2001. Federal government employment in the Region increased by 2.2% (36 jobs) in 2010.

Figure 7 details changes in public sector employment within the Greater Charlottesville Region and compares those rates of growth to the Commonwealth of Virginia.

Since 2000, the rate of growth in local government employment in the Region (18.7%) was slightly higher than in the Commonwealth of Virginia outside of the Region (16.4%). Within the region, there was significant growth in local government employment in every jurisdiction except the City of Charlottesville.

Figure 7
Percent Changes in Government Employment, 2000-2010

<u>Municipality</u>	<u>Local Govt.</u>	<u>State Govt.</u>	<u>Federal Govt.</u>	<u>Total</u>
Albemarle Co.	+29.4%	+39.7%	+1,039.4%	+43.1%
Charlottesville	-3.0%	+1.8%	-61.9%	-8.0%
Fluvanna Co.	+51.6%	-5.9%	-9.1%	+27.4%
Greene Co.	+13.4%	+5.9%	-27.0%	+10.6%
Louisa Co.	+32.9%	-8.1%	+11.5%	+26.9%
Nelson Co.	+16.3%	+27.6%	-1.6%	+15.0%
Orange Co.	+16.0%	-17.0%	-5.3%	+7.4%
<u>Region (Total)</u>	<u>+18.7%</u>	<u>+20.6%</u>	<u>-9.9%</u>	<u>+17.9%</u>
Virginia (Outside Region)	+16.4%	+3.8%	+14.4%	+13.3%

Source: Data from Virginia Employment Commission

The rate of growth of State government employment in the Region (20.6%) since 2000 was significantly higher than in the rest of the Virginia (3.8%). Within the Region, State government employment growth has been most significant in Albemarle County, tied to the University's growth, and in Nelson County.

In comparison, Fluvanna County (-5.9%), Louisa County (-8.1%) and Orange County (-17.0%) lost State government jobs since 2000.

The rate of growth of Federal government employment in the Region (-9.9%) since 2000 was lower than in the rest of Virginia, which saw an increase of 14.4%.

Regarding Federal government job data, it is important to note that in June 2001, approximately 600 civilian federal government jobs (US Army – National Ground Intelligence Center) relocated within the Region, from the City of Charlottesville to Albemarle County.² While this

²The Virginia Employment Commission data does not capture this job movement in 2001,

“move” reflects a significant job gain for Albemarle and job loss for Charlottesville and certainly has some localized economic effects, there is no significant regional effect on employment.

As a result of the significantly greater growth in State government employment, public sector employment in the Greater Charlottesville Region increased at a faster rate than the rate of growth in public sector employment in the rest of

2002 or 2003. It appears, however, that the data beginning with 2004 does reflect this job movement. We have adjusted the data for 2001 through 2003 to accurately reflect the job movement. Frequently the nature of federal government employment is such that, particularly within the armed services, an employee's work site and payment item are assigned to different locations. Consequently a federal work site may in fact have many more or less employees than are reported to state employment agencies such as a VEC. It is also important to note that employees of governmental contractors are not included among “federal government employees” but are accounted for at their home work sites and in their respective NAICS employment codes.

the Commonwealth of Virginia between 2000 and 2010.

V. General Trends -- Overall Employment: 2000-2010

Overall employment – private and public sectors – has increased in the *Greater Charlottesville Region* since 2000. Total private and public sector employment grew from an annual average of 100,708 in 2000 to 110,073 in 2010, an average annual rate of increase of 0.89%. During this period, private sector employment grew at an average annual rate of 0.59% and public sector employment grew at an average annual rate of 1.66%.

Albemarle County

Overall employment in *Albemarle County* between 2000 and 2010 grew from 38,838 to 48,515, an average annual rate of increase of 2.25%. Private sector employment grew at an average annual rate of 1.62% and public sector employment grew at an average annual rate of 3.65%.

The 3.65% average annual rate of growth in public sector employment was the highest of the component municipalities in the Region.

City of Charlottesville

Overall employment in the *City of Charlottesville* between 2000 and 2010 decreased from 37,888 to 34,640, an average annual rate of decrease of 0.89%. Private sector employment decreased at an average annual rate of 0.92% and public sector employment decreased at an average annual rate of 0.83%.

The 0.89% average annual rate of decrease in overall employment and the 0.83% average annual rate of decrease in public sector employment were both the lowest of the component municipalities in the Region.

Fluvanna County

Overall employment in *Fluvanna County* between 2000 and 2010 grew from 3,582 to 4,079, an average annual rate of increase of 1.31%. Private sector employment grew at an average annual rate of 0.80% and public sector employment increased at an average annual rate of 2.45%.

Greene County

Overall employment in *Greene County* between 2000 and 2010 decreased from 3,505 to 3312, an average annual rate of decrease of 0.56%. Private sector employment decreased at an average annual rate of 1.07% and public sector employment increased at an average annual rate of 1.01%.

The 1.07% average annual rate of decrease in private sector employment was the lowest of the component municipalities in the Region.

Louisa County

Overall employment in *Louisa County* between 2000 and 2010 grew from 5,811 to 7,327, an average annual rate of increase of 2.35%. Private sector employment grew at an average annual rate of 2.33% and public sector employment grew at an average annual rate of 2.41%.

The 2.35% average annual rate of increase in overall employment and the 2.33% average annual rate of increase in private sector

employment were both the highest of the component municipalities in the Region.

Nelson County

Overall employment in *Nelson County* between 2000 and 2010 grew from 3,378 to 3,399, an average annual rate of increase of 0.06%. Private sector employment decreased at an average annual rate of 0.26% and public sector employment grew at an average annual rate of 1.41%.

Orange County

Overall employment in *Orange County* between 2000 and 2010 grew from 7,707 to 8,801, an average annual rate of increase of 1.34%. Private sector employment grew at an average annual rate

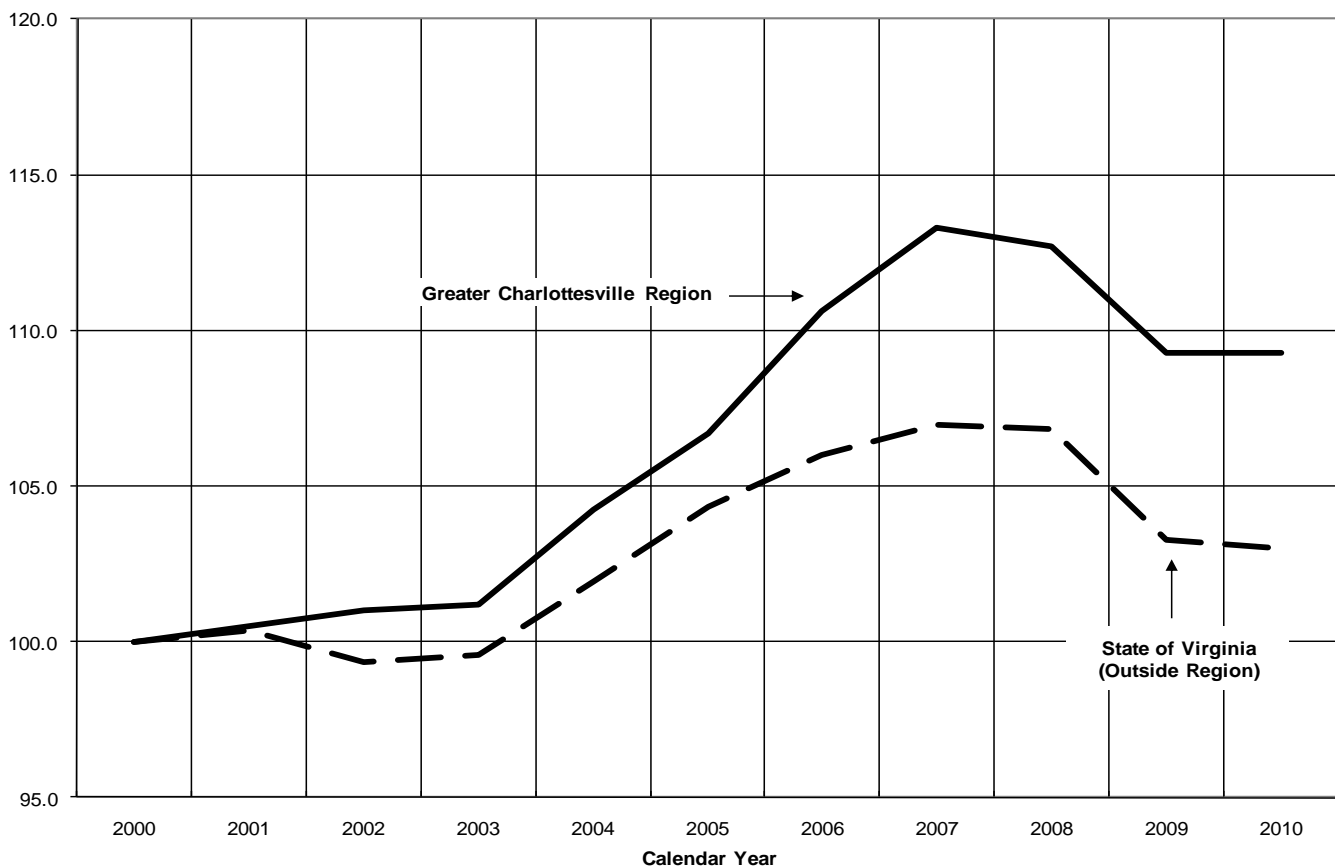
of 1.53% and public sector employment grew at an average annual rate of 0.71%.

A summary of municipal level employment by industry appears in Appendix II.

Figure 8 presents a comparison of job growth since 2000 in the Greater Charlottesville Region and the Commonwealth of Virginia.

The graph shows that overall (combined private and public sector) employment increased by 9.3% in the Greater Charlottesville Region. This compares favorably against the overall employment growth of 3.0% experienced in Virginia outside of the Region.

**Figure 8
CHANGE IN OVERALL EMPLOYMENT
GREATER CHARLOTTESVILLE REGION & THE STATE OF VIRGINIA**



Source: Data From Virginia Employment Commission

However, it should be kept in mind that the Region's private sector job growth has only recently (since 2006) exceeded Virginia's (see Figure 2). The Region's outperformance of the rest of the Virginia prior to 2006 is the result of the disparity in public sector job gains (see Figure 7).

VI. Employment in 2011: Early Indicators

As of the preparation of this report, there is no data for 2011 from the data set used for the preparation of this report. Thus, there is no way to determine whether the generally stagnant employment situation experienced in the Region in 2010 is improving. However, data available from other data series³ suggest that 2011 will be a year of moderate private sector job growth and continued job losses in the public sector. Overall employment in the Region is on pace for growth of approximately 1.5%.

VII. The Data

The measure of employment utilized in this study is insured employment. The insured employment series is an establishment-based series and represents a measure of the number of jobs available in an area. Under this data series, a resident of Albemarle County employed in the City of Charlottesville would appear in the employment data for the City of Charlottesville.

The more widely known and oft-cited establishment-based employment series is the non-

agricultural employment series. However, non-agricultural employment data is not collected or reported for most of the individual municipalities comprising the Greater Charlottesville Region ("The Region"). For this report, the Greater Charlottesville Region is defined as the City of Charlottesville and the Counties of Albemarle, Fluvanna, Greene, Louisa, Nelson and Orange⁴. To track the number of jobs available in the Region as defined for this report, the insured employment data series is the only available source.

The U.S. Department of Labor and the State Employment Security Agencies (in Virginia, that agency is the Virginia Employment Commission) conduct the Quarterly Census of Employment and Wages (QCEW) Program. The QCEW program produces a comprehensive count of employment for workers covered by State Unemployment insurance laws and Federal workers covered by the Unemployment Compensation for Federal Employees program. Because certain groups of workers are excluded from these programs, they are excluded from the covered employment data. Those excluded include members of the armed forces, the self-employed, railroad workers covered by the railroad unemployment insurance system, proprietors, and an individual employer's family members who may be working in the employer's establishment on an unpaid basis.

The data also do not reveal "multiple job-holders." Multiple job holders include individuals

³ *The non-agricultural data series which measures employment of residents. The most recent data available for the Charlottesville Metropolitan Statistical Area is from June 2011.*

⁴ *This is different than the Federal Government's definition of the Charlottesville Metropolitan Statistical Area (MSA) of the City of Charlottesville and the Counties of Albemarle, Fluvanna, Greene and Nelson.*

seeking to take advantage of the demand for labor and/or to meet their economic needs through second positions (full or part-time), self-employment, etc. The United States Department of Labor – Bureau of Labor Statistics (BLS) has studied this issue thoroughly over time and estimates the extent of multiple job-holding using the “Current Population Survey.”

Between 2000 and 2010, the BLS reports that between 4.9% and 5.6% of the employed population holds multiple jobs. Five percent (5%) of the Greater Charlottesville Region’s reported 2010 total average annual employment of 110,073 is approximately 5,500. This estimate is not reflected in the data used for this report.

Unless otherwise noted, the measure employed in this report for any given year is “Annual Average Employment” which is the numerical average calculated for the 12-month calendar year. This measure eliminates seasonal and short-term employment fluctuations.

The industry level data utilized in this report was obtained from the Virginia Employment Commission and follows the North American Industry Classification System (NAICS). A limitation of the data at the county and city level is that the employment in certain narrowly defined industries may not be disclosed in order to maintain the confidentiality of individual employers.⁵ This disclosure problem exists to a lesser extent when using Metropolitan Area or State level data.

At the county and city level, this disclosure problem is overcome by aggregating certain

narrowly defined industries into more broadly defined categories. The aggregation and reporting of NAICS industry sector employment data for purposes of this report follows the reporting format used by the Virginia Employment Commission.

Regardless of these limitations, we believe the data presented herein provide a useful tool in understanding employment changes over the last decade in the Greater Charlottesville Region.

⁵ A limitation that also existed under the previously used SIC classification system.

APPENDIX I

Definition of Industry Classifications Used in Report

<i>Natural Resources & Mining:</i>	Agriculture (NAICS Code 11) and Mining (Code 21)
<i>Construction:</i>	Construction (NAICS Code 23)
<i>Manufacturing:</i>	Manufacturing (NAICS Codes 31-33)
<i>Trade, Transportation & Utilities:</i>	Utilities (Code 22); Wholesale Trade (NAICS Code 42) and Retail Trade (Code 44-45); and Transportation & Warehousing (NAICS Code 48-49)
<i>Information:</i>	Information (Code 51)
<i>Financial Activities:</i>	Finance and Insurance (NAICS Code 52) and Real Estate, Rental & Leasing (Code 53)
<i>Professional & Business Services:</i>	Professional, Scientific and Technical Services (NAICS Code 54), Management of Companies and Enterprises (Code 55), and Administrative and Support and Waste Management and Remediation Services (Code 56)
<i>Educational and Health Services:</i>	Educational Services (NAICS Code 61) and Health Care and Social Assistance (Code 62)
<i>Leisure & Hospitality:</i>	Arts, Entertainment & Recreation (NAICS Code 71), Accommodation and Food Services (Code 72)
<i>Other Services:</i>	Other Services (Except Public Administration (Code 81))

APPENDIX II
EMPLOYMENT BY MUNICIPALITY, BY INDUSTRY SECTOR

**EMPLOYMENT IN CHARLOTTESVILLE REGION
2000-2010**

Industry Sector(s)	2000	2001	2002	2003	2004	2005	2006	2007	2008	2009	2010
Private Sector:											
Natural Resources & Mining	1,241	1,258	1,165	1,223	1,321	1,331	1,313	1,289	1,352	1,330	1,365
Construction	6,773	7,008	7,002	7,253	7,748	8,102	8,411	8,310	7,621	6,309	6,256
Manufacturing	10,006	8,918	8,485	7,270	7,242	7,060	6,957	7,106	6,677	5,994	5,470
Trade, Transportation & Utilities	16,174	16,148	16,275	16,854	17,281	17,688	18,216	18,401	18,267	17,302	17,247
Information	2,870	2,768	2,650	2,367	2,217	2,243	2,345	2,384	2,346	2,198	2,173
Financial Activities	3,719	3,768	3,808	3,843	4,041	4,272	4,350	4,143	4,085	3,804	3,776
Professional & Business Services	9,715	9,671	9,420	9,930	10,378	10,715	11,881	12,802	12,632	12,316	12,326
Education & Health Services	8,524	8,768	9,095	9,158	9,394	9,685	10,269	10,921	10,901	11,390	11,796
Leisure & Hospitality	9,986	10,365	10,468	10,250	10,951	11,276	11,844	12,519	12,619	12,407	12,632
Other Services	4,031	4,249	4,324	4,284	4,330	4,208	4,185	4,257	4,419	4,383	4,426
Unclassified	16	6	1	0	0	1	0	3	1	0	0
Public Sector:											
Federal Government	1,824	1,540	1,589	1,610	1,556	1,565	1,583	1,569	1,568	1,608	1,644
State Government	15,824	16,362	16,696	17,120	17,674	18,236	18,696	18,808	19,143	19,066	19,083
Local Government	10,006	10,366	10,753	10,747	10,866	11,055	11,349	11,614	11,874	11,957	11,882
Grand Total	100,708	101,194	101,731	101,907	104,997	107,437	111,397	114,124	113,502	110,062	110,073
<i>Private Sector</i>	<i>73,054</i>	<i>72,927</i>	<i>72,693</i>	<i>72,430</i>	<i>74,901</i>	<i>76,581</i>	<i>79,771</i>	<i>82,135</i>	<i>80,916</i>	<i>77,431</i>	<i>77,465</i>
<i>Public Sector</i>	<i>27,654</i>	<i>28,268</i>	<i>29,038</i>	<i>29,477</i>	<i>30,096</i>	<i>30,856</i>	<i>31,628</i>	<i>31,991</i>	<i>32,585</i>	<i>32,631</i>	<i>32,609</i>

NOTE: Totals May Not Reconcile Due to Disclosure Issues and Rounding

**EMPLOYMENT IN ALBEMARLE COUNTY
2000-2010**

Industry Sector(s)	2000	2001	2002	2003	2004	2005	2006	2007	2008	2009	2010
Private Sector:											
Natural Resources & Mining	523	539	482	527	541	530	520	489	527	487	482
Construction	2,739	2,795	2,847	2,811	2,924	3,080	3,391	3,416	3,092	2,586	2,442
Manufacturing	4,395	3,452	3,005	2,749	3,033	2,810	2,848	3,154	2,943	2,675	2,357
Trade, Transportation & Utilities	5,568	5,364	5,452	5,996	6,113	6,337	6,658	7,411	6,981	6,605	6,287
Information	694	743	850	768	662	664	712	668	658	617	637
Financial Activities	1,584	1,522	1,533	1,477	1,509	1,668	1,630	1,560	1,603	1,593	1,715
Professional & Business Services	4,061	4,192	4,070	4,390	4,967	5,126	5,844	6,460	6,528	6,377	6,265
Education & Health Services	3,466	3,566	3,962	4,161	4,184	4,321	4,758	5,305	5,224	5,467	5,597
Leisure & Hospitality	3,025	3,117	3,204	3,282	3,417	3,713	4,170	4,702	4,663	4,609	4,623
Other Services	1,440	1,562	1,661	1,585	1,579	1,578	1,537	1,670	1,796	1,808	1,886
Unclassified	7	3	0	0	0	0	0	0	0	0	0
Public Sector:											
Federal Government	71	367	665	665	668	674	690	690	687	746	809
State Government	8,159	8,588	8,957	10,709	10,860	11,286	11,528	11,159	11,450	11,349	11,399
Local Government	3,106	3,208	3,390	3,363	3,367	3,468	3,535	3,720	3,756	3,820	4,018
Grand Total	38,838	39,018	40,078	42,482	43,822	45,256	47,820	50,405	49,908	48,738	48,515
<i>Private Sector</i>	<i>27,502</i>	<i>26,855</i>	<i>27,066</i>	<i>27,745</i>	<i>28,928</i>	<i>29,827</i>	<i>32,068</i>	<i>34,836</i>	<i>34,014</i>	<i>32,822</i>	<i>32,290</i>
<i>Public Sector</i>	<i>11,336</i>	<i>12,163</i>	<i>13,012</i>	<i>14,737</i>	<i>14,895</i>	<i>15,428</i>	<i>15,753</i>	<i>15,569</i>	<i>15,893</i>	<i>15,915</i>	<i>16,226</i>

NOTE: Totals May Not Reconcile Due to Disclosure Issues and Rounding

**EMPLOYMENT IN CITY OF CHARLOTTESVILLE
2000-2010**

Industry Sector(s)	<u>2000</u>	<u>2001</u>	<u>2002</u>	<u>2003</u>	<u>2004</u>	<u>2005</u>	<u>2006</u>	<u>2007</u>	<u>2008</u>	<u>2009</u>	<u>2010</u>
Private Sector:											
Natural Resources & Mining	13	11	11	11	15	43	44	38	33	24	32
Construction	1,968	2,051	1,866	1,891	1,909	1,988	2,063	1,991	1,853	1,578	1,514
Manufacturing	1,015	953	938	927	877	878	887	770	762	731	701
Trade, Transportation & Utilities	5,789	5,947	5,915	5,535	5,578	5,715	5,752	5,038	5,201	4,621	4,638
Information	2,010	1,811	1,614	1,437	1,405	1,426	1,481	1,564	1,536	1,433	1,398
Financial Activities	1,620	1,728	1,707	1,751	1,719	1,714	1,774	1,729	1,609	1,455	1,305
Professional & Business Services	4,463	4,232	3,944	4,088	3,899	4,005	4,223	4,254	4,372	4,302	4,115
Education & Health Services	3,833	3,823	3,763	3,637	3,776	3,981	4,071	4,025	3,957	4,096	4,184
Leisure & Hospitality	4,719	4,917	4,885	4,753	5,151	5,089	5,060	5,129	5,234	5,056	5,275
Other Services	1,658	1,713	1,700	1,727	1,723	1,615	1,621	1,515	1,571	1,569	1,547
Unclassified	6	0	0	0	0	0	0	0	0	0	0
Public Sector:											
Federal Government	1,458	922	669	691	647	649	644	630	622	608	556
State Government	6,647	6,779	6,886	5,535	5,865	5,985	6,215	6,724	6,786	6,782	6,766
Local Government	2,689	2,795	2,829	2,793	2,898	2,878	2,858	2,789	2,861	2,883	2,609
Grand Total	37,888	37,681	36,727	34,776	35,461	35,965	36,693	36,197	36,396	35,137	34,640
<i>Private Sector</i>	<i>27,094</i>	<i>27,186</i>	<i>26,343</i>	<i>25,757</i>	<i>26,050</i>	<i>26,454</i>	<i>26,977</i>	<i>26,053</i>	<i>26,127</i>	<i>24,865</i>	<i>24,708</i>
<i>Public Sector</i>	<i>10,794</i>	<i>10,496</i>	<i>10,384</i>	<i>9,019</i>	<i>9,410</i>	<i>9,512</i>	<i>9,717</i>	<i>10,143</i>	<i>10,269</i>	<i>10,273</i>	<i>9,931</i>

NOTE: Totals May Not Reconcile Due to Disclosure Issues and Rounding

**EMPLOYMENT IN FLUVANNA COUNTY
2000-2010**

Industry Sector(s)	2000	2001	2002	2003	2004	2005	2006	2007	2008	2009	2010
Private Sector:											
Natural Resources & Mining	10	14	30	29	44	53	100	77	76	70	75
Construction	362	390	401	463	503	499	497	477	474	369	444
Manufacturing	312	299	299	348	369	317	289	261	101	103	106
Trade, Transportation & Utilities	685	635	596	531	555	561	577	581	599	603	597
Information	7	5	6	6	8	12	14	14	15	17	16
Financial Activities	54	52	67	79	86	100	145	95	84	75	72
Professional & Business Services	279	250	269	250	250	332	414	324	328	321	346
Education & Health Services	416	442	459	472	485	465	462	481	497	499	542
Leisure & Hospitality	208	228	222	272	337	360	370	379	410	387	376
Other Services	205	207	187	155	153	163	174	183	184	188	176
Unclassified	0	0	0	0	0	0	0	0	0	0	0
Public Sector:											
Federal Government	44	37	40	40	40	39	41	41	43	36	40
State Government	393	400	391	383	391	387	362	351	374	384	370
Local Government	607	632	673	683	739	768	812	856	898	914	920
Grand Total	3,582	3,590	3,639	3,711	3,960	4,054	4,257	4,120	4,081	3,966	4,079
<i>Private Sector</i>	<i>2,538</i>	<i>2,522</i>	<i>2,536</i>	<i>2,605</i>	<i>2,791</i>	<i>2,860</i>	<i>3,042</i>	<i>2,872</i>	<i>2,766</i>	<i>2,632</i>	<i>2,749</i>
<i>Public Sector</i>	<i>1,044</i>	<i>1,069</i>	<i>1,104</i>	<i>1,106</i>	<i>1,170</i>	<i>1,194</i>	<i>1,215</i>	<i>1,248</i>	<i>1,315</i>	<i>1,334</i>	<i>1,330</i>

NOTE: Totals May Not Reconcile Due to Disclosure Issues and Rounding

**EMPLOYMENT IN GREENE COUNTY
2000-2010**

Industry Sector(s)	<u>2000</u>	<u>2001</u>	<u>2002</u>	<u>2003</u>	<u>2004</u>	<u>2005</u>	<u>2006</u>	<u>2007</u>	<u>2008</u>	<u>2009</u>	<u>2010</u>
Private Sector:											
Natural Resources & Mining	139	120	53	56	54	62	56	52	49	48	44
Construction	247	246	279	284	325	360	353	380	339	281	247
Manufacturing	1,085	1,290	1,370	574	178	175	150	151	145	121	98
Trade, Transportation & Utilities	517	499	516	520	548	559	562	565	591	623	729
Information	18	77	38	27	22	23	19	24	27	24	17
Financial Activities	64	65	60	69	67	75	96	84	78	74	69
Professional & Business Services	98	125	128	122	137	155	152	252	264	269	452
Education & Health Services	213	292	230	221	226	219	224	245	278	320	334
Leisure & Hospitality	235	250	239	252	240	240	260	270	303	323	338
Other Services	93	89	100	100	107	107	108	124	118	108	107
Unclassified	1	0	0	0	0	0	0	0	0	0	0
Public Sector:											
Federal Government	53	45	43	38	36	37	38	38	39	36	39
State Government	17	19	19	16	16	16	18	18	20	20	18
Local Government	725	712	734	759	743	729	821	819	833	831	822
Grand Total	3,505	3,828	3,809	3,038	2,698	2,758	2,857	3,022	3,083	3,077	3,312
<i>Private Sector</i>	<i>2,710</i>	<i>3,052</i>	<i>3,012</i>	<i>2,225</i>	<i>1,903</i>	<i>1,975</i>	<i>1,980</i>	<i>2,146</i>	<i>2,191</i>	<i>2,190</i>	<i>2,433</i>
<i>Public Sector</i>	<i>795</i>	<i>776</i>	<i>796</i>	<i>813</i>	<i>795</i>	<i>782</i>	<i>877</i>	<i>875</i>	<i>892</i>	<i>887</i>	<i>879</i>

NOTE: Totals May Not Reconcile Due to Disclosure Issues and Rounding

**EMPLOYMENT IN LOUISA COUNTY
2000-2010**

Industry Sector(s)	2000	2001	2002	2003	2004	2005	2006	2007	2008	2009	2010
Private Sector:											
Natural Resources & Mining	128	141	127	116	118	109	63	62	62	62	70
Construction	568	602	668	766	945	951	913	952	881	739	936
Manufacturing	1,388	1,269	1,363	1,375	1,393	1,478	1,448	1,496	1,463	1,264	1,153
Trade, Transportation & Utilities	1,518	1,599	1,666	1,712	1,757	1,773	1,757	1,771	1,816	1,822	2,018
Information	36	33	36	26	27	26	24	26	26	25	21
Financial Activities	130	125	140	152	154	169	139	116	117	113	119
Professional & Business Services	242	276	272	308	343	329	492	735	473	424	523
Education & Health Services	206	212	235	236	220	228	267	304	337	345	375
Leisure & Hospitality	253	286	291	270	237	238	264	376	383	431	408
Other Services	109	105	117	146	160	144	147	152	147	132	139
Unclassified	0	1	0	0	0	0	0	0	0	0	0
Public Sector:											
Federal Government	61	50	49	52	51	53	54	55	62	65	68
State Government	148	144	144	147	156	153	155	153	146	147	136
Local Government	1,025	1,068	1,115	1,140	1,147	1,165	1,203	1,232	1,308	1,325	1,362
Grand Total	5,811	5,911	6,224	6,446	6,707	6,816	6,925	7,430	7,222	6,894	7,327
<i>Private Sector</i>	<i>4,577</i>	<i>4,649</i>	<i>4,916</i>	<i>5,107</i>	<i>5,354</i>	<i>5,445</i>	<i>5,514</i>	<i>5,990</i>	<i>5,706</i>	<i>5,357</i>	<i>5,761</i>
<i>Public Sector</i>	<i>1,234</i>	<i>1,262</i>	<i>1,308</i>	<i>1,339</i>	<i>1,354</i>	<i>1,371</i>	<i>1,412</i>	<i>1,440</i>	<i>1,516</i>	<i>1,537</i>	<i>1,566</i>

NOTE: Totals May Not Reconcile Due to Disclosure Issues and Rounding

**EMPLOYMENT IN NELSON COUNTY
2000-2010**

Industry Sector(s)	2000	2001	2002	2003	2004	2005	2006	2007	2008	2009	2010
Private Sector:											
Natural Resources & Mining	236	217	233	233	257	246	224	216	245	281	274
Construction	283	291	320	344	370	401	404	382	358	284	245
Manufacturing	203	160	160	139	224	220	235	240	267	195	220
Trade, Transportation & Utilities	504	511	501	466	461	439	423	413	392	407	403
Information	32	33	34	33	34	31	33	31	31	33	37
Financial Activities	101	106	116	114	117	101	108	107	117	101	96
Professional & Business Services	216	215	224	250	267	228	240	240	252	218	215
Education & Health Services	200	211	210	215	219	245	242	256	278	314	328
Leisure & Hospitality	862	908	936	769	796	768	814	762	752	743	716
Other Services	135	144	151	159	157	156	160	169	177	170	169
Unclassified	1	0	0	0	0	0	0	0	0	0	0
Public Sector:											
Federal Government	61	56	58	58	55	56	55	53	54	50	60
State Government	29	30	37	37	35	35	37	40	40	37	37
Local Government	515	515	529	524	531	551	568	576	592	593	599
Grand Total	3,378	3,397	3,508	3,342	3,522	3,477	3,543	3,486	3,556	3,427	3,399
<i>Private Sector</i>	<i>2,773</i>	<i>2,796</i>	<i>2,885</i>	<i>2,722</i>	<i>2,902</i>	<i>2,835</i>	<i>2,883</i>	<i>2,816</i>	<i>2,869</i>	<i>2,746</i>	<i>2,703</i>
<i>Public Sector</i>	<i>605</i>	<i>601</i>	<i>624</i>	<i>619</i>	<i>621</i>	<i>642</i>	<i>660</i>	<i>669</i>	<i>686</i>	<i>680</i>	<i>696</i>

NOTE: Totals May Not Reconcile Due to Disclosure Issues and Rounding

**EMPLOYMENT IN ORANGE COUNTY
2000-2010**

Industry Sector(s)	2000	2001	2002	2003	2004	2005	2006	2007	2008	2009	2010
Private Sector:											
Natural Resources & Mining	192	216	229	251	293	288	306	355	361	358	388
Construction	606	635	622	694	772	823	789	711	624	471	429
Manufacturing	1,608	1,494	1,350	1,158	1,168	1,182	1,100	1,034	996	906	837
Trade, Transportation & Utilities	1,593	1,595	1,630	2,094	2,270	2,305	2,487	2,622	2,687	2,620	2,575
Information	73	66	72	69	59	61	62	57	52	49	47
Financial Activities	167	169	185	202	388	445	458	453	478	393	401
Professional & Business Services	356	382	513	522	516	540	516	538	416	405	410
Education & Health Services	191	222	236	216	283	226	245	305	330	348	438
Leisure & Hospitality	684	658	690	651	773	868	906	902	875	859	895
Other Services	391	429	408	412	451	446	439	444	426	410	401
Unclassified	0	0	0	0	0	0	0	0	0	0	0
Public Sector:											
Federal Government	76	64	65	65	59	57	61	62	61	67	72
State Government	430	403	262	293	352	374	381	362	326	346	357
Local Government	1,339	1,437	1,484	1,486	1,442	1,497	1,553	1,621	1,625	1,591	1,553
Grand Total	7,707	7,769	7,746	8,112	8,827	9,113	9,302	9,466	9,257	8,823	8,801
<i>Private Sector</i>	<i>5,862</i>	<i>5,866</i>	<i>5,935</i>	<i>6,268</i>	<i>6,973</i>	<i>7,185</i>	<i>7,308</i>	<i>7,422</i>	<i>7,244</i>	<i>6,819</i>	<i>6,820</i>
<i>Public Sector</i>	<i>1,845</i>	<i>1,904</i>	<i>1,811</i>	<i>1,844</i>	<i>1,853</i>	<i>1,928</i>	<i>1,995</i>	<i>2,045</i>	<i>2,012</i>	<i>2,004</i>	<i>1,982</i>

NOTE: Totals May Not Reconcile Due to Disclosure Issues and Rounding